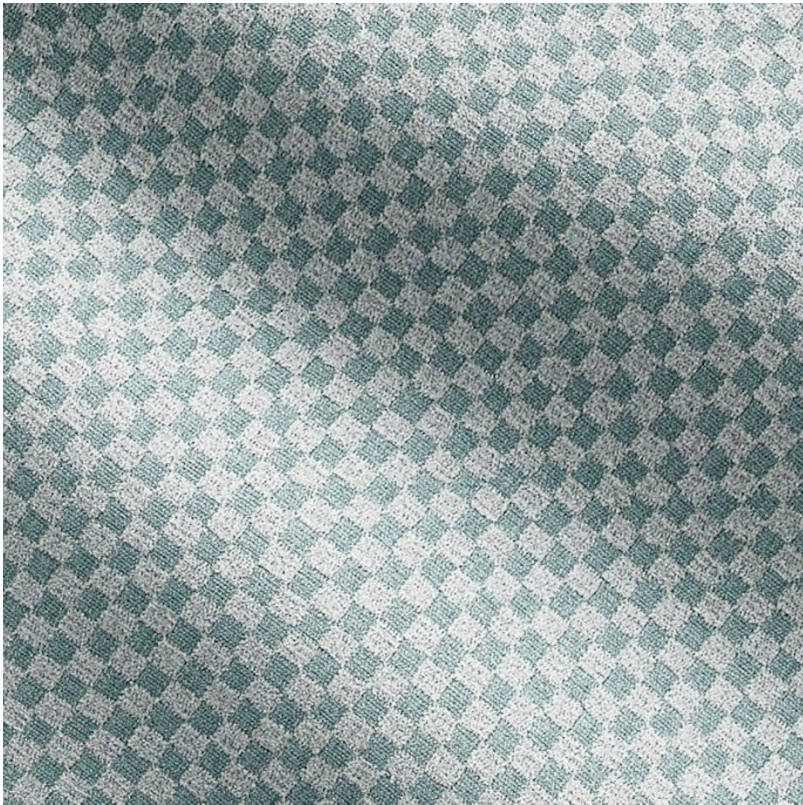


PERENNIALS



Ice Blue
Waffle
939-798

DETAILS & SPECS

| | |
|----------------------|---------------------------------|
| Abrasion | 50,000 double rubs |
| Brush Pill | Class 4.5 |
| UFAC/NFPA 260 | PASS |
| Width | 54 in (137 cm) |
| Weight | 13.7 Oz/sq yd (466 gm/sq m) |
| Designer | Vincent Van Duysen |
| Collection | 2025 B Fall: Vincent van Duysen |
| Color Family | Light Blue |
| Color | Ice Blue |
| Vertical Repeat | .6 IN (1.5 CM) |
| Horizontal Repeat | .6 IN (1.5 CM) |

DESCRIPTION

A beautifully crafted chenille fabric with a tonal checkerboard design. The plush texture and subtle shifts in tone add depth and dimension, giving it a sophisticated yet effortless feel.

All Perennials 100% solution-dyed acrylic fabrics are backed by an industry-leading no-fade guarantee valid for three years from the date of purchase (with the exceptions of prints, which hold a one-year warranty and Cabana™, which holds a five year warranty).

Perennials’ technically superior fabrics are fade resistant, mildew- and mold-resistant, bleach cleanable and easily maintained. Be confident when you select fabrics identified by the Perennials Fiber Mark that you will receive a product that lives up to our name: enduring, constant and fun.